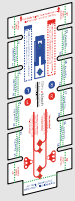




Parçalar / Parts

Paket İçeriği / Package Included



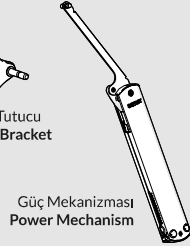
Delik Şablonu
Drilling Template



Kapak Tutucu
Door Bracket

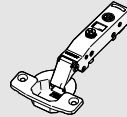


Kabin Tutucu
Cabinet Bracket

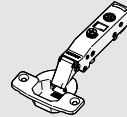


Güç Mekanizması
Power Mechanism

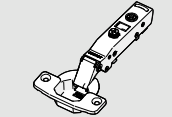
Tavsiye Edilen Ürünler / Recommended Products



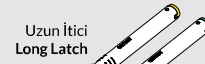
Master Yavaşlatıcıli Menteşe
Master Soft-Close Hinge



Master Yavaşlatıcısız Menteşe
Master Self-Close Hinge



Master Yaysız Menteşe
Master Free-Swing Hinge



Uzun İtici
Long Latch

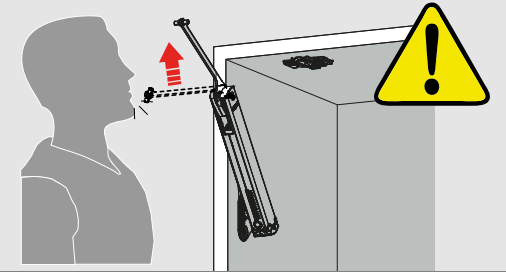


Sunta Vidası
Chipboard Screw
Ø3,5x16



Master Altlık (Tüm Tipler)
Master Mounting Plate (All Types)

Dikkat / Caution



Ürün Seçim Tablosu / Yavaşlatıcı Uygulama
Product Selection Table / Soft-Close Application

SLIM-MECH	[Master Yavaşlatıcı x1] + [Master Yavaşlatıcı x1] [Master Soft-Close x1] + [Master Self-Close x1]				Master Yavaşlatıcı x2 Master Soft-Close x2			
	A		B		C		D	
Kapak Yüksekliği Door Height	min kg	max kg	min kg	max kg	min kg	max kg	min kg	max kg
250-260	1	1.81	1.81	3.08	3.08	5.2	5.2	6.92
261-270	0.97	1.76	1.76	2.97	2.97	5	5	6.67
271-280	0.93	1.67	1.67	2.79	2.79	4.82	4.82	6.43
281-290	0.89	1.59	1.59	2.69	2.69	4.63	4.63	6.21
291-300	0.86	1.5	1.5	2.6	2.6	4.46	4.46	6
301-310	0.84	1.46	1.46	2.52	2.52	4.32	4.32	5.81
311-320	0.81	1.43	1.43	2.44	2.44	4.19	4.19	5.63
321-330	0.78	1.4	1.4	2.37	2.37	4.05	4.05	5.46
331-340	0.76	1.37	1.37	2.3	2.3	3.92	3.92	5.3
341-350	0.74	1.33	1.33	2.21	2.21	3.8	3.8	5.14
351-360	0.72	1.28	1.28	2.15	2.15	3.67	3.67	5
361-370	0.7	1.23	1.23	2.09	2.09	3.54	3.54	4.87
371-380	0.68	1.2	1.2	2.03	2.03	3.42	3.42	4.74
381-390	0.66	1.17	1.17	1.98	1.98	3.33	3.33	4.62
391-400	0.64	1.15	1.15	1.93	1.93	3.25	3.25	4.5
401-410	0.63	1.11	1.11	1.88	1.88	3.12	3.12	4.39
411-420	0.61	1.08	1.08	1.84	1.84	3.05	3.05	4.29
421-430	0.6	1.05	1.05	1.79	1.79	2.97	2.97	4.19
431-440	0.58	1.03	1.03	1.75	1.75	2.9	2.9	4.09
441-450	0.57	1	1	1.71	1.71	2.83	2.83	4
451-460	0.56	0.99	0.99	1.67	1.67	2.76	2.76	3.91
461-470	0.54	0.97	0.97	1.64	1.64	2.71	2.71	3.83
471-480	0.53	0.95	0.95	1.6	1.6	2.65	2.65	3.75
481-490	0.52	0.93	0.93	1.57	1.57	2.59	2.59	3.67
491-500	0.51	0.92	0.92	1.52	1.52	2.54	2.54	3.6
501-510	0.5	0.89	0.89	1.49	1.49	2.49	2.49	3.53
511-520	0.49	0.87	0.87	1.46	1.46	2.44	2.44	3.46
521-530	0.48	0.84	0.84	1.42	1.42	2.4	2.4	3.4
531-540	0.47	0.83	0.83	1.39	1.39	2.35	2.35	3.33
541-550	0.46	0.81	0.81	1.37	1.37	2.31	2.31	3.27
551-560	0.46	0.8	0.8	1.34	1.34	2.26	2.26	3.22
561-570	0.45	0.79	0.79	1.32	1.32	2.22	2.22	3.16
571-580	0.44	0.77	0.77	1.3	1.3	2.17	2.17	3.1
581-590	0.43	0.76	0.76	1.27	1.27	2.14	2.14	3.05
591-600	0.43	0.75	0.75	1.25	1.25	2.09	2.09	3

Kesişen alanlarda daha zayıf mekanizma önerilir.
Less powerful mechanism is recommended for intersection areas.

Çift taraflı mekanizma kullanıldığında ağırlık kapasitesi iki katına çıkar.
If using the double-sided mechanism, the weight capacity is doubled.

*Yukarıdaki kapak ağırlıkları kulp dahil toplam ağırlıklardır.
*The door weights above includes door and handle together.

Ürün Seçim Tablosu / Bas-Aç Uygulama
Product Selection Table / Push-Open Application

SLIM-MECH	[Master Yavaşlatıcısız x1] + [Master Yaysız x1] [Master Self-Close x1] + [Master Free-Swing x1]							
	A		B		C		D	
Kapak Yüksekliği Door Height	min kg	max kg	min kg	max kg	min kg	max kg	min kg	max kg
250-260	0.8	1.74	1.74	2.84	2.84	4.79	4.79	6.92
261-270	0.77	1.67	1.67	2.74	2.74	4.61	4.61	6.67
271-280	0.74	1.59	1.59	2.62	2.62	4.41	4.41	6.43
281-290	0.71	1.53	1.53	2.5	2.5	4.25	4.25	6.2
291-300	0.69	1.47	1.47	2.4	2.4	4.1	4.1	6
301-310	0.67	1.42	1.42	2.32	2.32	3.96	3.96	5.8
311-320	0.65	1.38	1.38	2.25	2.25	3.83	3.83	5.62
321-330	0.63	1.34	1.34	2.18	2.18	3.68	3.68	5.45
331-340	0.6	1.3	1.3	2.12	2.12	3.55	3.55	5.29
341-350	0.59	1.26	1.26	2.06	2.06	3.43	3.43	5.14
351-360	0.57	1.21	1.21	1.99	1.99	3.33	3.33	5
361-370	0.55	1.17	1.17	1.92	1.92	3.24	3.24	4.86
371-380	0.54	1.13	1.13	1.86	1.86	3.12	3.12	4.73
381-390	0.53	1.1	1.1	1.81	1.81	3.03	3.03	4.61
391-400	0.51	1.08	1.08	1.76	1.76	2.94	2.94	4.5
401-410	0.5	1.05	1.05	1.72	1.72	2.87	2.87	4.39
411-420	0.49	1.03	1.03	1.68	1.68	2.8	2.8	4.29
421-430	0.48	1	1	1.64	1.64	2.73	2.73	4.19
431-440	0.46	0.98	0.98	1.6	1.6	2.67	2.67	4.09
441-450	0.45	0.96	0.96	1.57	1.57	2.61	2.61	4
451-460	0.44	0.94	0.94	1.53	1.53	2.55	2.55	3.91
461-470	0.43	0.92	0.92	1.5	1.5	2.5	2.5	3.83
471-480	0.42	0.9	0.9	1.47	1.47	2.44	2.44	3.75
481-490	0.42	0.88	0.88	1.44	1.44	2.39	2.39	3.67
491-500	0.41	0.86	0.86	1.41	1.41	2.35	2.35	3.6
501-510	0.4	0.84	0.84	1.38	1.38	2.28	2.28	3.53
511-520	0.39	0.83	0.83	1.35	1.35	2.22	2.22	3.46
521-530	0.38	0.81	0.81	1.32	1.32	2.17	2.17	3.4
531-540	0.38	0.8	0.8	1.3	1.3	2.13	2.13	3.33
541-550	0.37	0.78	0.78	1.27	1.27	2.09	2.09	3.27
551-560	0.36	0.77	0.77	1.25	1.25	2.05	2.05	3.21
561-570	0.36	0.76	0.76	1.23	1.23	2.01	2.01	3.16
571-580	0.35	0.74	0.74	1.21	1.21	1.98	1.98	3.1
581-590	0.34	0.73	0.73	1.19	1.19	1.95	1.95	3.05
591-600	0.34	0.72	0.72	1.17	1.17	1.92	1.92	3

Ses Stoperli Sarı Uzun İtici [Kod: 1029986E]
Yellow Push-Open with Bumper [Code: 1029986E]

Ses Stoperli Yeşil Uzun İtici [Kod: 1029986C]
Green Push-Open with Bumper [Code: 1029986C]

Kesişen alanlarda daha zayıf mekanizma önerilir.
Less powerful mechanism is recommended for intersection areas.

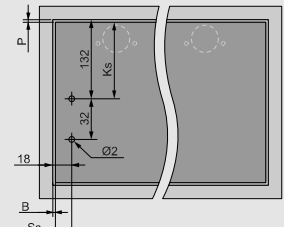
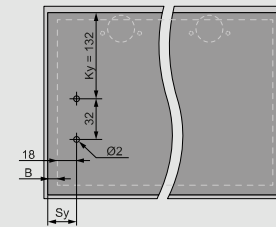
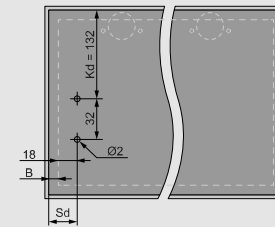
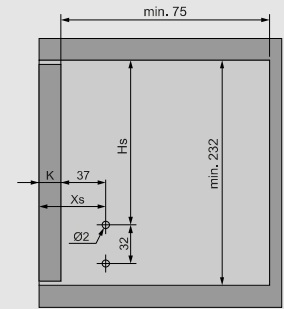
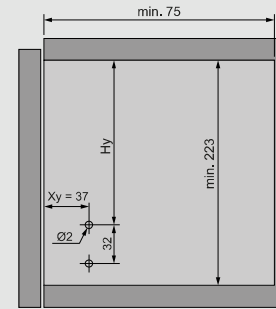
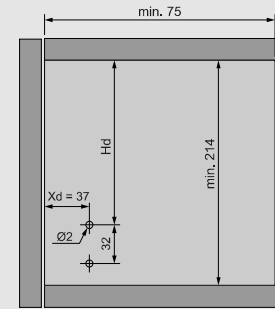
Çift taraflı mekanizma kullanıldığında ağırlık kapasitesi iki katına çıkar.
If using the double-sided mechanism, the weight capacity is doubled.

Teknik Ölçüler
Technical Dimensions

Düz Menteşe ("0 mm" Crank) Full Overlay ("0 mm" Crank)			
Altlık Yüksekliği Mounting Plate Height	5 mm	7 mm	9 mm
	Hd	164	166
Xd	37		
Kd	132		
Sd	18+B		

Deveboynu ("9 mm" Crank) Half Overlay ("9 mm" Crank)			
Altlık Yüksekliği Mounting Plate Height	5 mm	7 mm	9 mm
	Hy	173	175
Xy	37		
Ky	132		
Sy	18+B		

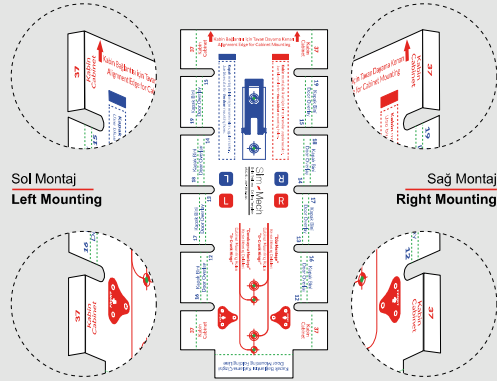
Süper Deveboynu ("18 mm" Crank) Inset ("18 mm" Crank)			
Altlık Yüksekliği Mounting Plate Height	5 mm	7 mm	9 mm
	Hs	182	184
Xs	37+K		
Ks	132-P		
Ss	18-B		



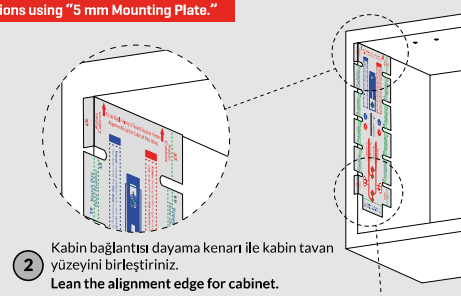


Kabin Delik Şablonu / Cabinet Drilling Template

! Kağıt şablon "Düz Mentеше" ve "Yarım Deveboynu Mentеше" uygulamalarında "5 mm Altlık" ile kullanıma uygundur.
Drilling template is convenient for "0 - Crank Hinge" and "9 - Crank Hinge" applications using "5 mm Mounting Plate."

Sol Montaj
Left MountingSağ Montaj
Right Mounting

1 Mekanizmayı kabinin sol tarafında kullanmak için soldaki, sağ tarafta kullanmak için sağdaki kabin katlama çizgilerini gösterildiği gibi katlayınız.
Fold the cabinet fold lines on the left to use the mechanism on the left cabinet side, and fold the cabinet fold lines on the right to use the mechanism on the right cabinet side, as shown.

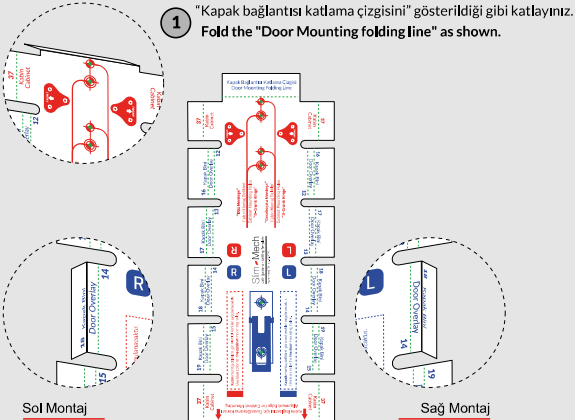


2 Kabin bağlantısı dayama kenarı ile kabin tavan yüzeyini birleştiriniz.
Lean the alignment edge for cabinet.

"Düz Mentеше"
Kabin Montaj Delikleri
Cabinet Mounting Holes
"0-Crank Hinge""Deveboynu Mentеше"
Kabin Montaj Delikleri
Cabinet Mounting Holes
"9-Crank Hinge"

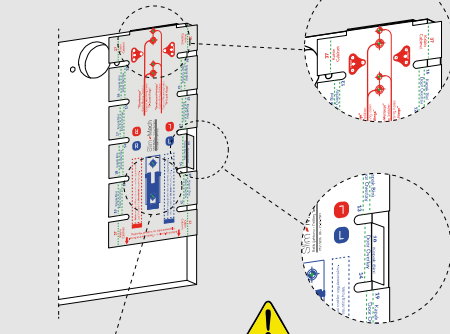
3 Mentеше tipine göre gerekli iki deliği işaretleyip Ø2mm matkap ile delik açınız.
Depending on the hinge type mark the required two holes and drill with Ø2mm drill bit.

Kapak Delik Şablonu / Door Drilling Template

Sol Montaj
Left MountingSağ Montaj
Right Mounting

2 Bini ölçüsüne göre "Kapak Bini" çizgilerinden uygun olanı gösterildiği gibi katlayınız.
Fold the "Door Overlay folding line" as shown according appropriate overlay dimension.

3 Katlanan yüzeyleri gösterildiği gibi kapağa hizalayınız.
Align the folded areas to the door edges as shown.

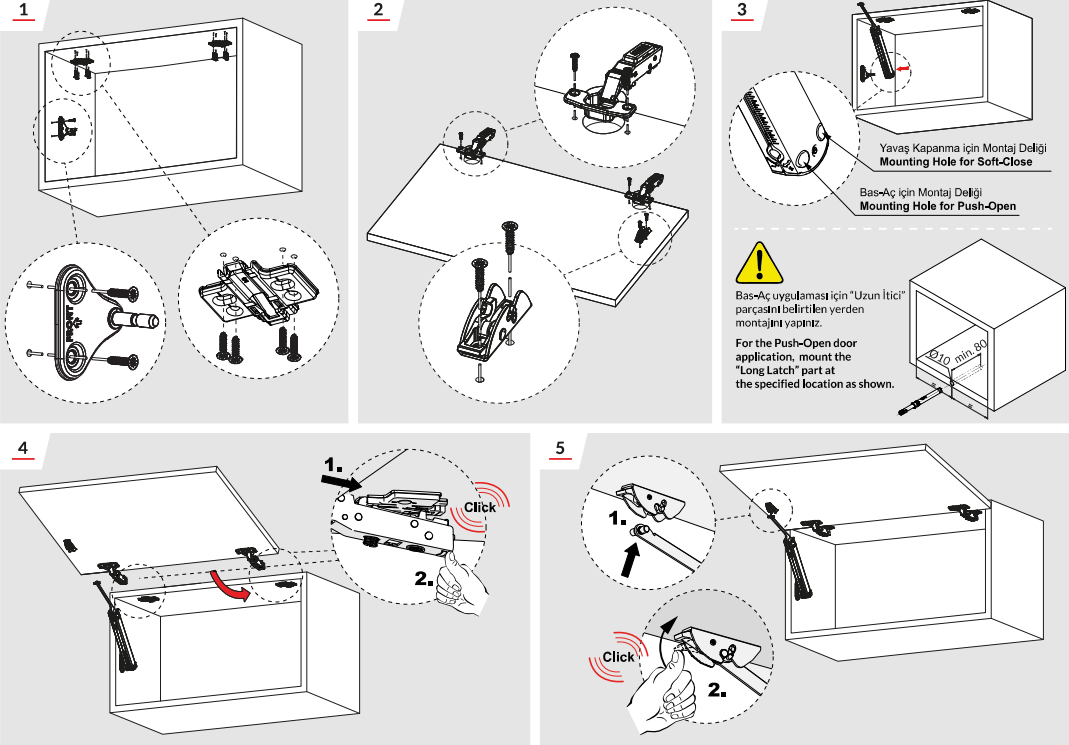


! Sol taraf için sol "Kapak Bini" katlama çizgisinden Sağ taraf için sağ "Kapak Bini" katlama çizgisinden katlayarak hizalayınız.

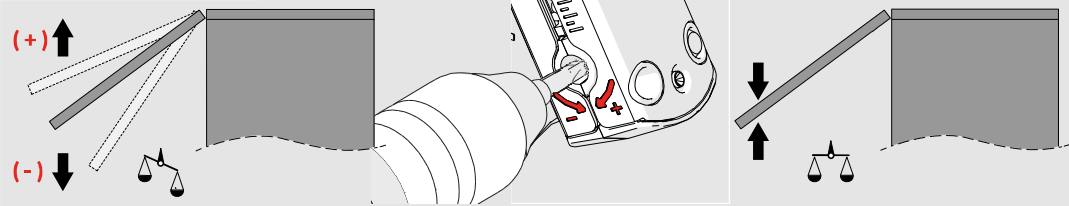
Fold the left "Door overlay" folding lines to use on the left door side, and fold the right "Door overlay" folding lines to use on the right door side, and align on the door edge as shown.

4 Belirtilen delik yerlerini işaretleyip Ø2mm matkap ile delik açınız.
Mark the required two holes and drill with Ø2mm drill bit.

Montaj / Assembly



Güç Ayarı / Power Adjustment



Kapak bırakıldığı zaman sabit durmayıp yukarı doğru çıkıyor ise (-) yönünde, aşağıya doğru iniyor ise (+) yönünde çevirerek denge ayarını yapabilirsiniz.
If the door in the open position is lifted and not fixed, turn in direction (-) and if it goes down, then turn in the direction (+) to adjust the balance.

Ayar / Adjustment

